

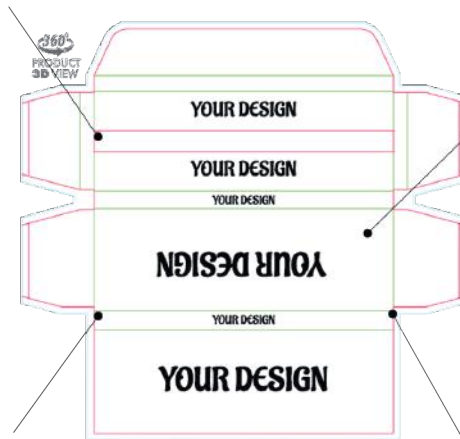
## TEMPLATE DESIGN GUIDELINES

to submit **PDF, PNG, JPG, AI, PSD** or **EPS** files over **EMAIL** to a sales representative or at **info@snailpapers.com**

**ROLLING PAPER LEAVES SLOT**  
The slot must be filled with background design. It will not be seen in final product.



Background design must be filled at least to the blue line.



**BOOKLET'S BACK**  
We suggest turning your artwork upside down.



Remove the green, blue and red lines from the template and set the CMYK colour mode before emailing files to us.

**FILE FORMAT:** PDF, PNG, JPG, AI, PSD or EPS

**COLOR MODE:** **CMYK** - when sending files to sales representative or at info@snailpapers.com

**FINISHED PRODUCT:** Finished products are going to be printed in **CMYK colours**. Difference between screen and final product is possible.

**YOUR DESIGN:** An area to create or add your design, illustrations, text, logo,..

**BLUE LINE:** The background design must be filled at least to the blue line.

**RED LINE:** Estimated knife cutting line.

All important artwork must be at least 3 mm from the redline inwards.

**GREEN LINE:** Folding area.

**BEYOND BLUE LINE:** Non printing area.

### ROLLING PAPERS

**LEAVES SLOT:** The leaves slot **must be** filled with design. The design will not be visible in the finished product.

**LAYOUT LINES:** All layout lines must be removed in the final version.

**GRAPHICS & FONTS:** Must be converted into vector graphics – curves.

**PICTURES:** Pictures must be embedded for AI, PSD, EPS or PDF file format.

**RESOLUTION:** **300 DPI**

**TRADEMARKS:** You take full responsibility for the use of trademarks in your artwork.

**MISTAKES:** You take full responsibility and we will not check for the position of pictures, texts, backgrounds, clip arts and spelling mistakes and overprint modes.

**PRINT DIFFERENCES:** We will not check the design difference between the original file and 3D online preview, provided PDF preview file, mock-up file and print file. Some colour difference is possible. Difference between the screen and the final product is possible.

